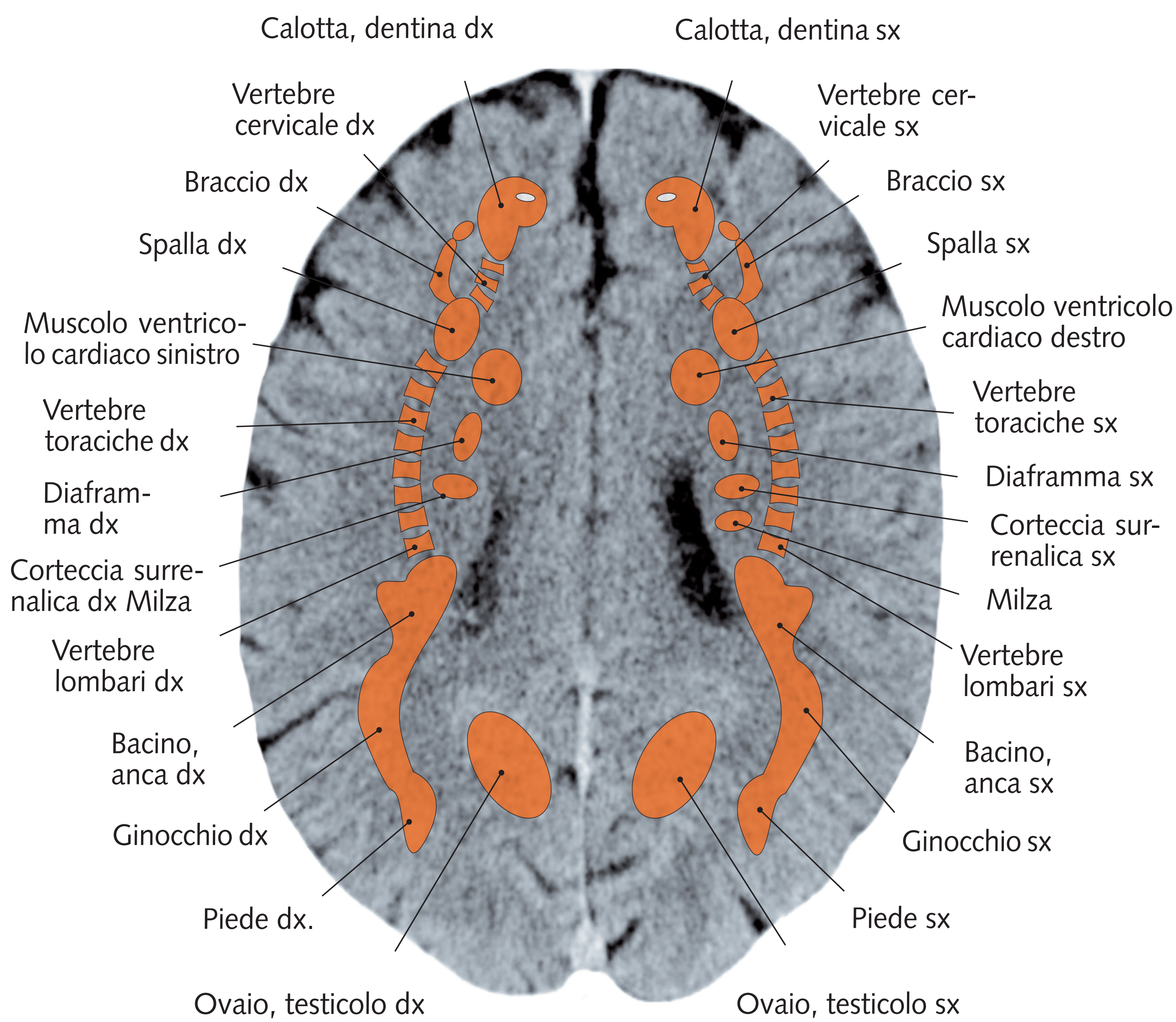
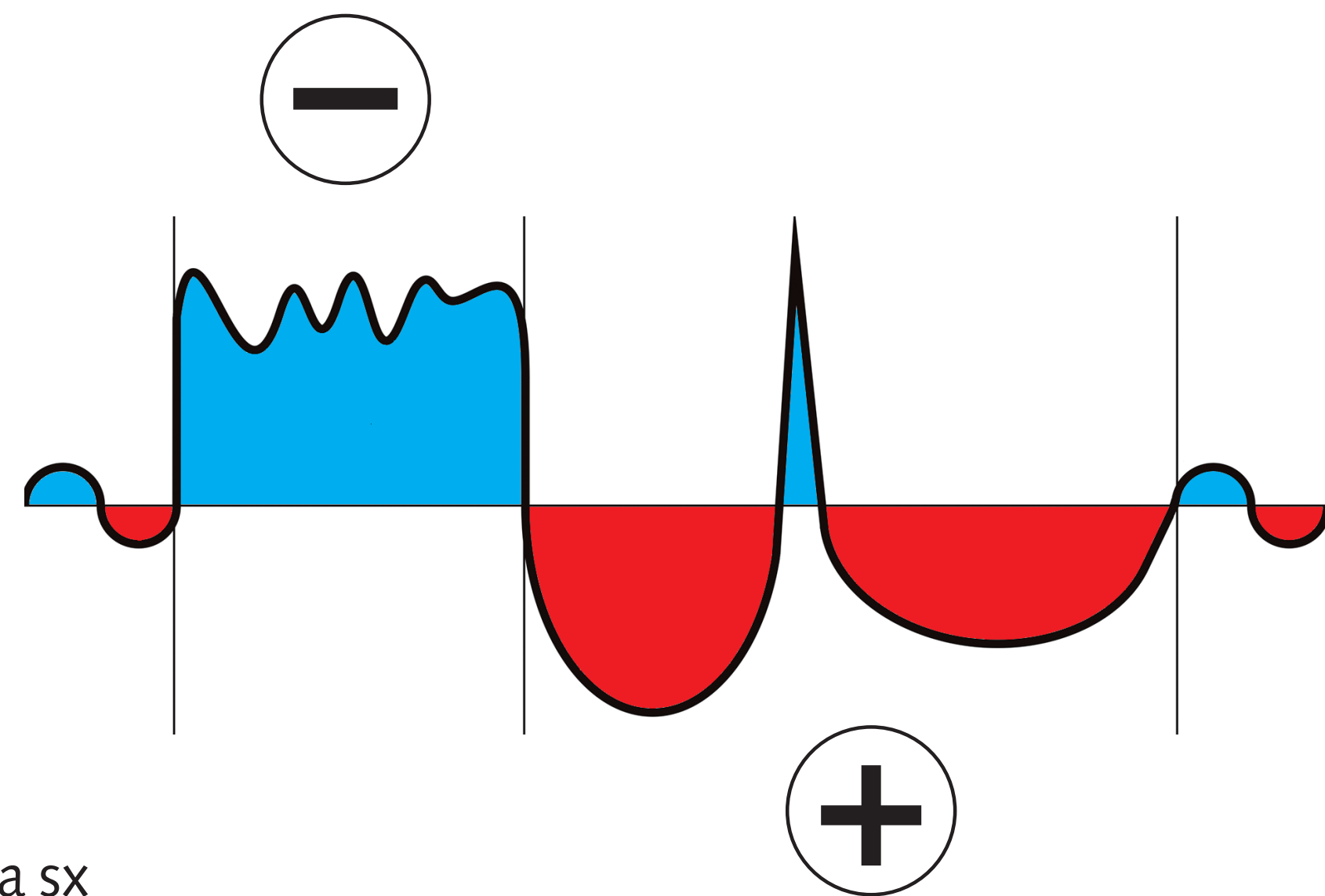


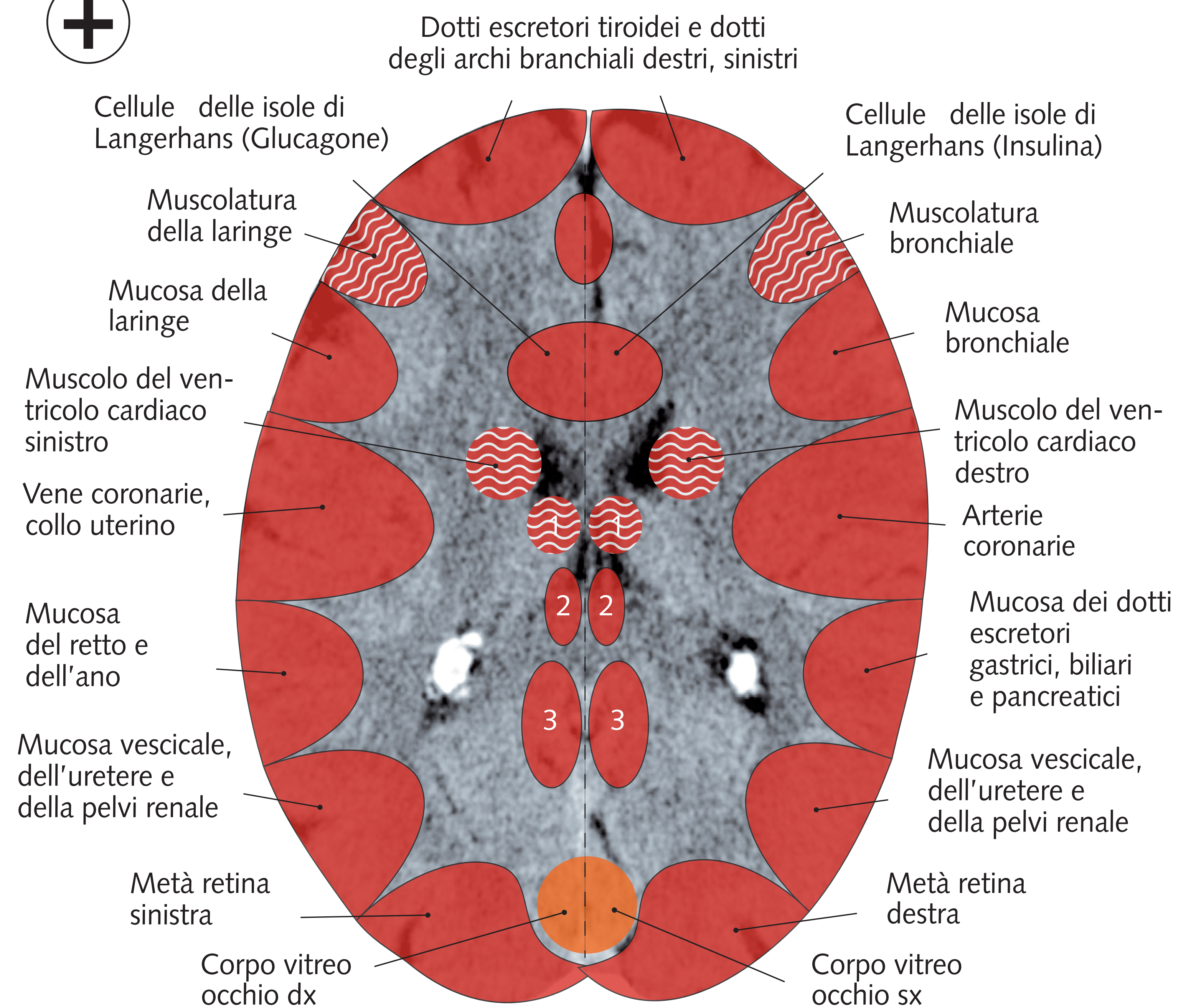
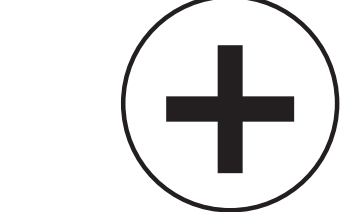
Midollo cerebrale mesoderma recente

Conflitto di
svalutazione



Corteccia cerebrale ectoderma

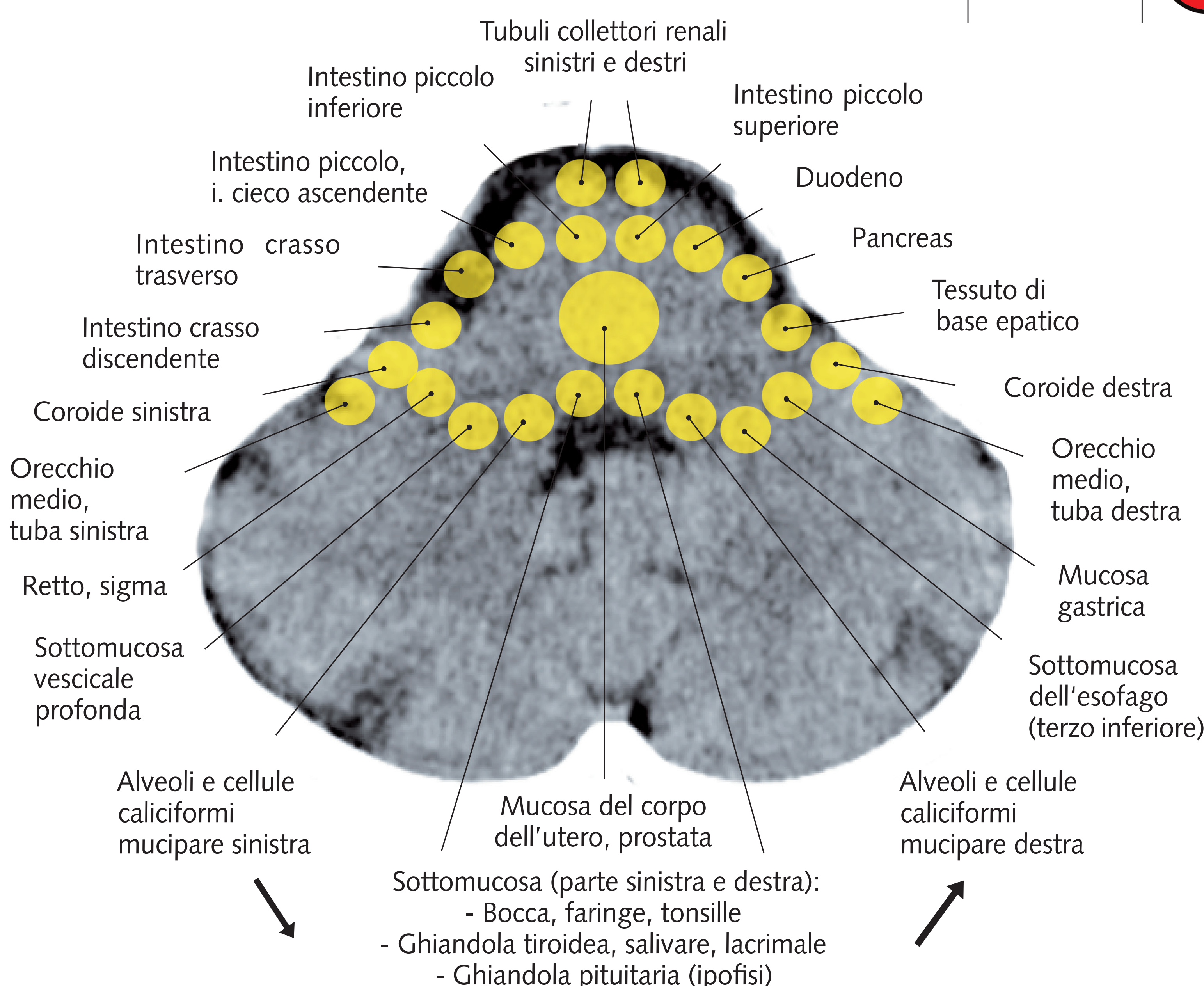
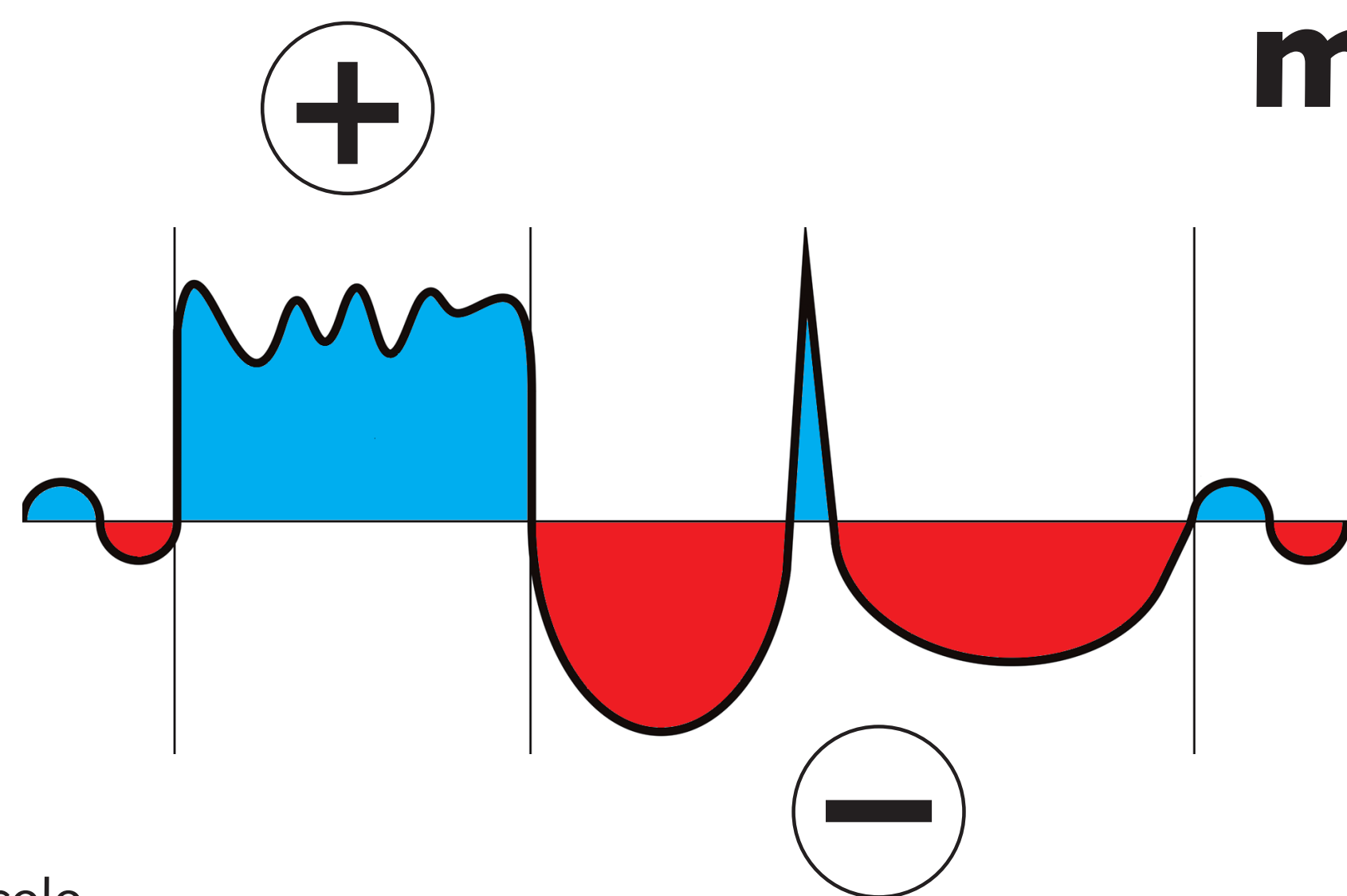
Conflitti sociali



- 1 Muscoli striati (motricità) - gamba destra e sinistra
- 2 Epidermide, pelo (valutazione sensoriale) - gamba destra e sinistra
- 3 Periostio (valutazione post-sensoriale) - gamba destra e sinistra

Tronco encefalico endoderma

Conflitto del
boccone



Cervelletto mesoderma antico

Violazione
dell'integrità

